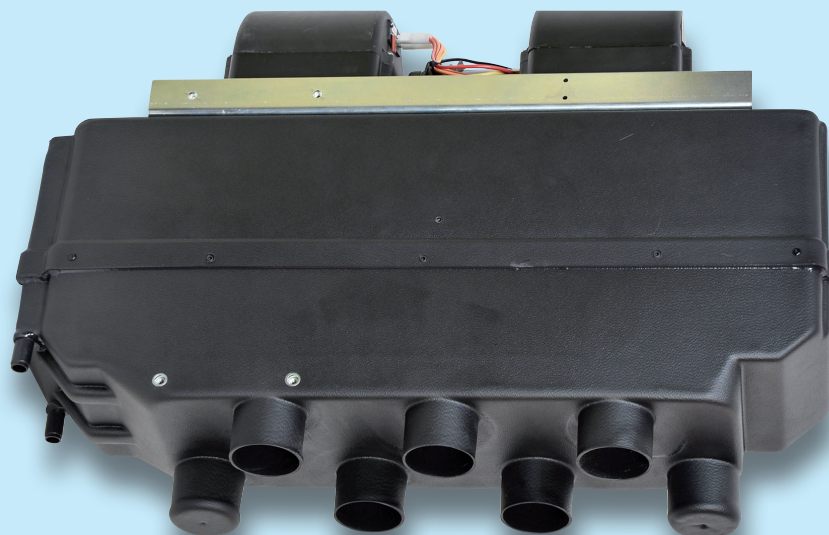




OXFORD AIR

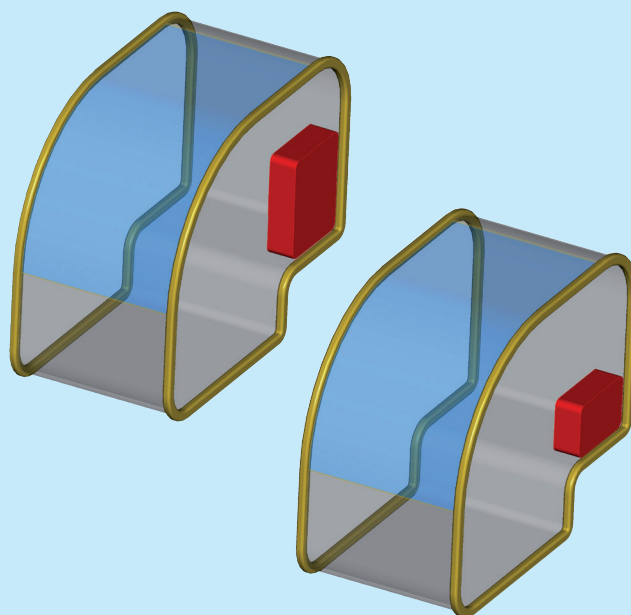
RISCALDATORE UNIVERSALE - STANDARD HEATER



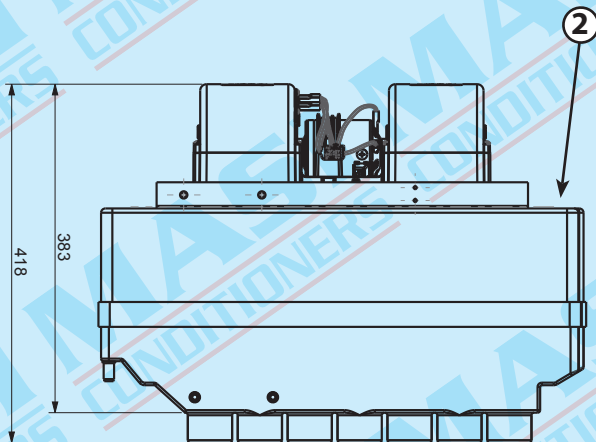
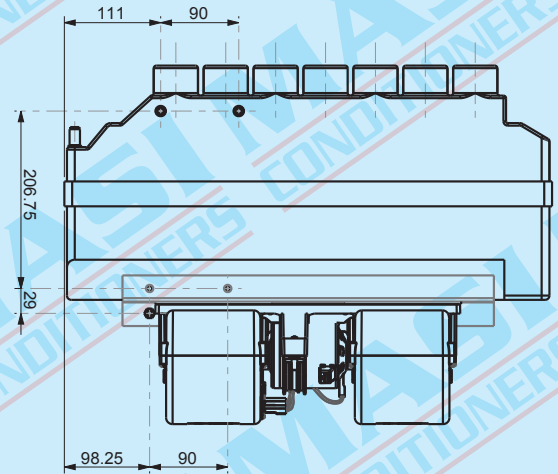
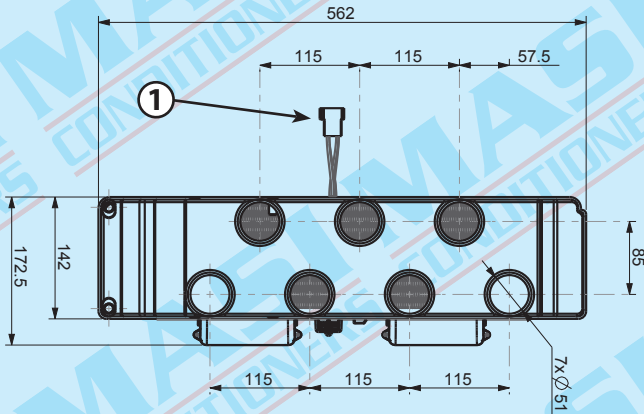
RISCALDATORE - HEATER

TIPO APPLICAZIONE:
A parete / Sottopancia

TYPE OF APPLICATION:
Under dash / Wall



RISCALDATORE UNIVERSALE STANDARD HEATER



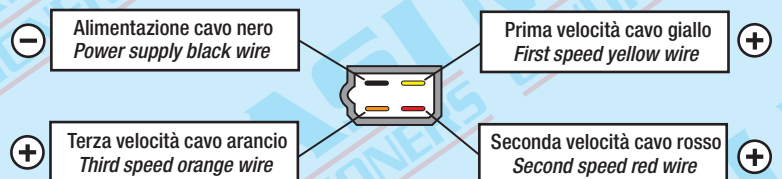
DATI TECNICI - TECHNICAL DATA

Potenza riscaldamento - Heating capacity	13 Kw
Portata aria - Air flow	850 m ³ /h
Corrente assorbita - Current draw (12v)	28 Ah
Corrente assorbita - Current draw (24v)	14 Ah
Peso - Weight	5 Kg

CODICE PART NUMBER	VERSIONE VERSION
U58CC	12 V.
U59CC	24 V.

1

Connettore quattro vie
Four way connector



2

Tubi acqua Ø 16 mm.
Water hoses Ø 16 mm.

