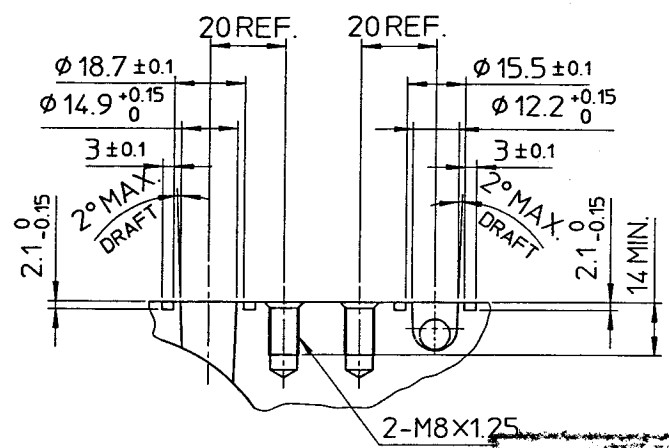
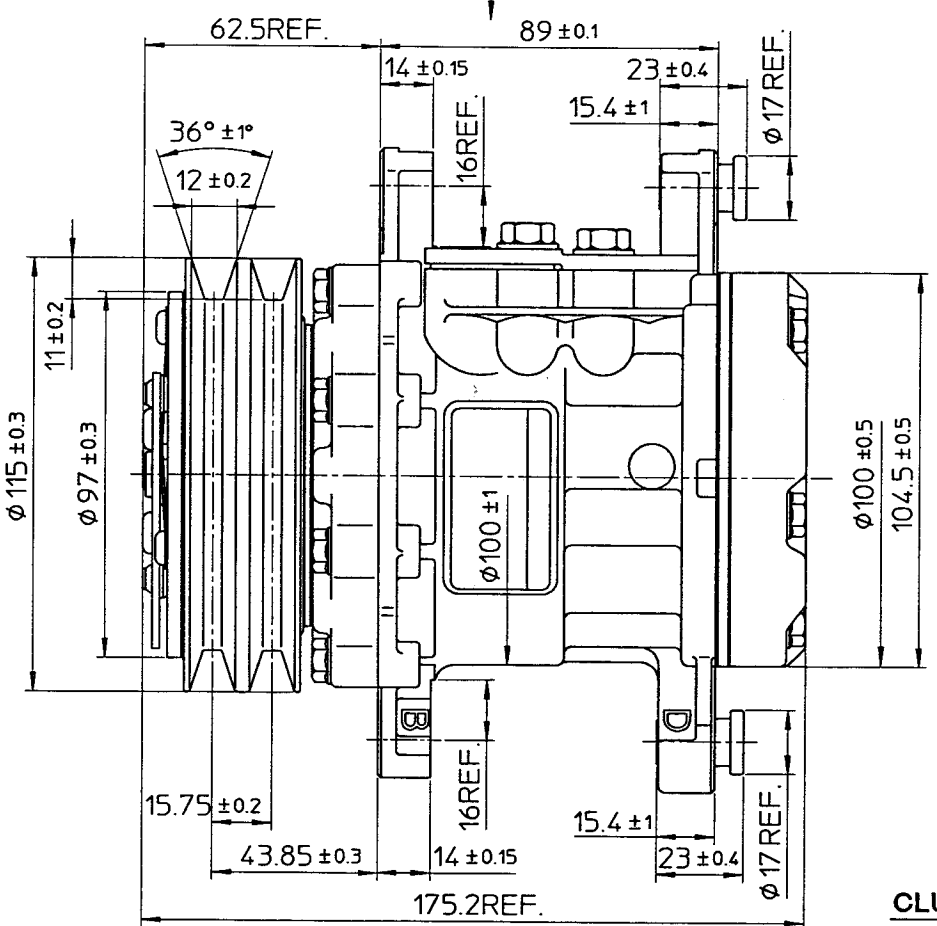
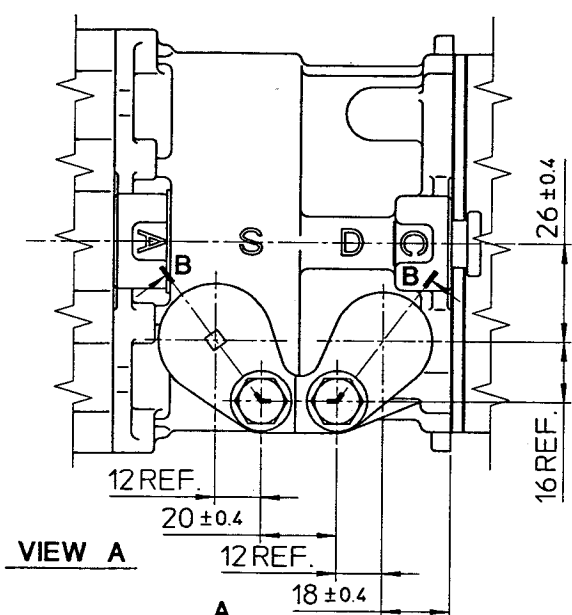
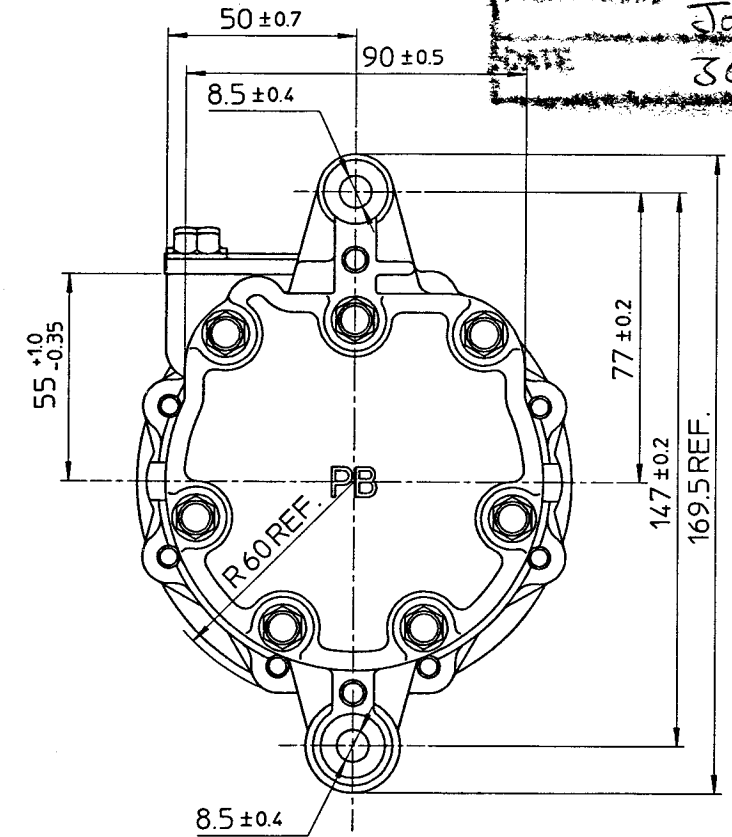


**COMPRESSOR SPECIFICATIONS**

BORE	∅ 25.4 mm ( 1 in.)
STROKE	28.1 mm ( 1.1 in.)
DISPLACEMENT PER REVOLUTION	99.8 cc/rev. ( 6.1 cu.in./rev.)
NUMBER OF CYLINDERS	7
MAXIMUM ALLOWABLE r.p.m.	9300 r.p.m.
MAXIMUM ALLOWABLE CONTINUOUS r.p.m.	6500 r.p.m.
REFRIGERANT	R134a
OIL (PAG)	100 cc ( 3.4 fl.oz.)
WEIGHT	2.8 kg ( 6.2 lb)



**PARTIAL SECT. B-B**



**CLUTCH SPECIFICATIONS**

RATED VOLTAGE	DC 12 V
BREAKAWAY TORQUE	2.35 kg-m ( 17.0 ft-lb)
MINIMUM ENGAGEMENT VOLTAGE	7.5 V MAX.
POWER CONSUMPTION	43 W ( CU )
MAXIMUM ALLOWABLE r.p.m.	9300 r.p.m.
MAXIMUM ALLOWABLE CONTINUOUS r.p.m.	6500 r.p.m.
BELT TYPE	A TYPE
PULLEY DIAMETER	∅ 115 mm ( 4.53 in.)
WEIGHT	kg ( lb)

DIE MASTER DRAWING  
 CHECKED AND APPROVED BY  
 PRINT NAME: **JON MITCHELL**  
 DATE: **30-09-1999**

**UNCONTROLLED COPY**

MATERIAL		PART NO.	NAME
THIRD ANGLE PROJECTION		<b>7170</b>	<b>COMPRESSOR</b>
DESIGN BY	SCALE	DATE	MODEL
<i>K. Endow</i>	<b>1:1</b>	<b>13.OCT.1999</b>	<b>SD7B10PB7170</b>
CHECKED BY	DATE	DATE	DRAWING NO.
<i>Chiyooka</i>	<b>13.OCT.1999</b>	<b>13.OCT.1999</b>	<b>7170-6000</b>
APPROVED BY	DATE	DATE	
<i>J. Takayoshi</i>	<b>13.OCT.1999</b>	<b>13.OCT.1999</b>	
REVISION RECORD		BY	DATE
NO.			